

drenatech[®]
INNOVATIVE.PAVING.SOLUTION

the innovative system of 100% permeable outdoor flooring that combines decorative features and extraordinary techniques, respecting the environment.

www.drenatech.com



drenatech
INNOVATIVE PAVING SOLUTION

Innovation

Drenatech® is an innovative product of Lechner Spa, a company with experience and professionalism in resin processing since 1920.

Drenatech® was born from the mix of three components, the first two (A+B) have the function of binder while the third element (C) is characterized by 100% recycled talian natural stones.

Drenatech® uses a special two-component solvent-free and odourless resin specially formulated to ensure high chemical/mechanical resistance, zero release of environmentally harmful substances and high wear resistance.

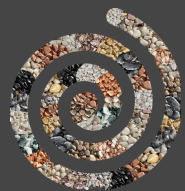


+



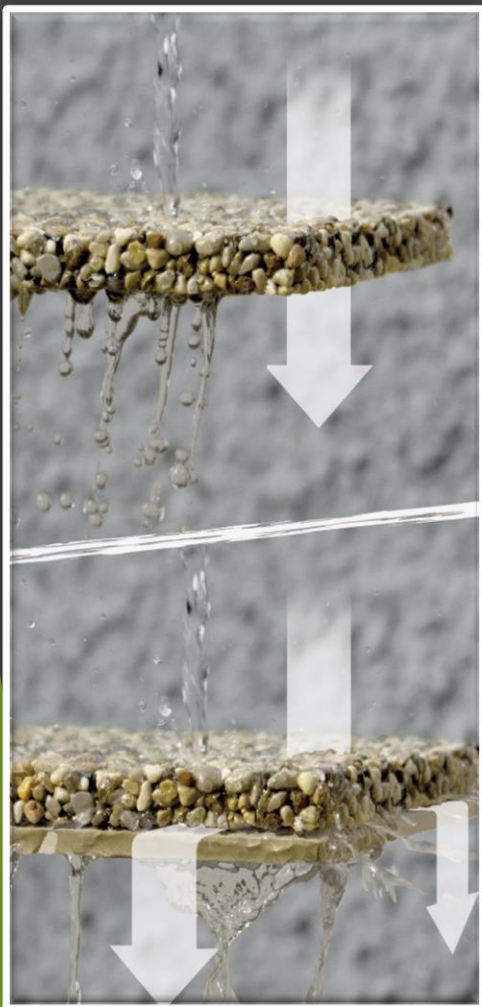
=



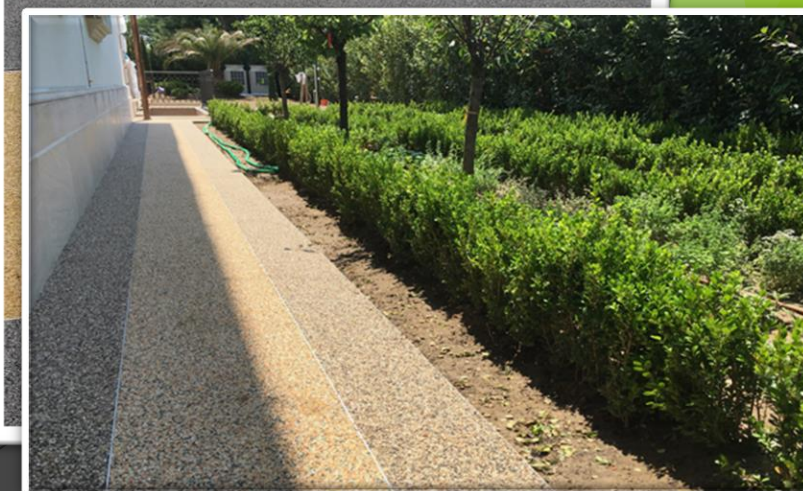


drenatech®
INNOVATIVE PAVING SOLUTION

Respect the environment



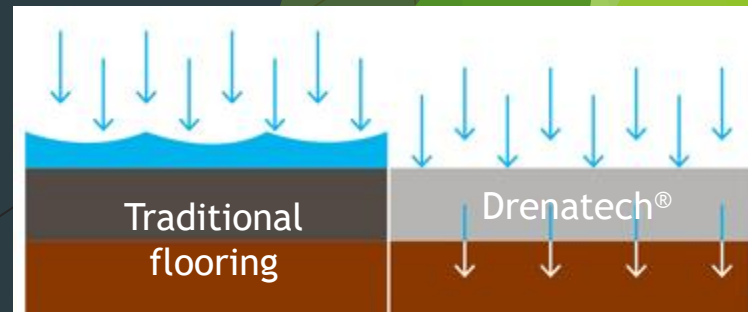
Thanks to its special composition and high porosity, Drenatech® allows water to flow naturally into the soil. The permeability values are 200/800 l/m²/min and allow the surface of the pavement to be considered as 100% draining. Drenatech® therefore respects the hydrological cycle and guarantees the recovery of water in the groundwater, making it a product particularly suitable for interventions in areas subject to environmental protection, where the return of water to the ground is required. Drenatech® also allows the reuse of the drained water without contaminating it with pollutants, if combined with a correct water collection system. It also contributes to the reduction of the cementification of the territory, respecting the surrounding environment. Another fundamental aspect is the fact that the stone used comes from waste material from Italian quarries, thus placing the product in the increasingly current context of the circular economy and sustainable development. Translated with www.DeepL.com/Translator (free version)





drenatech
INNOVATIVE PAVING SOLUTION

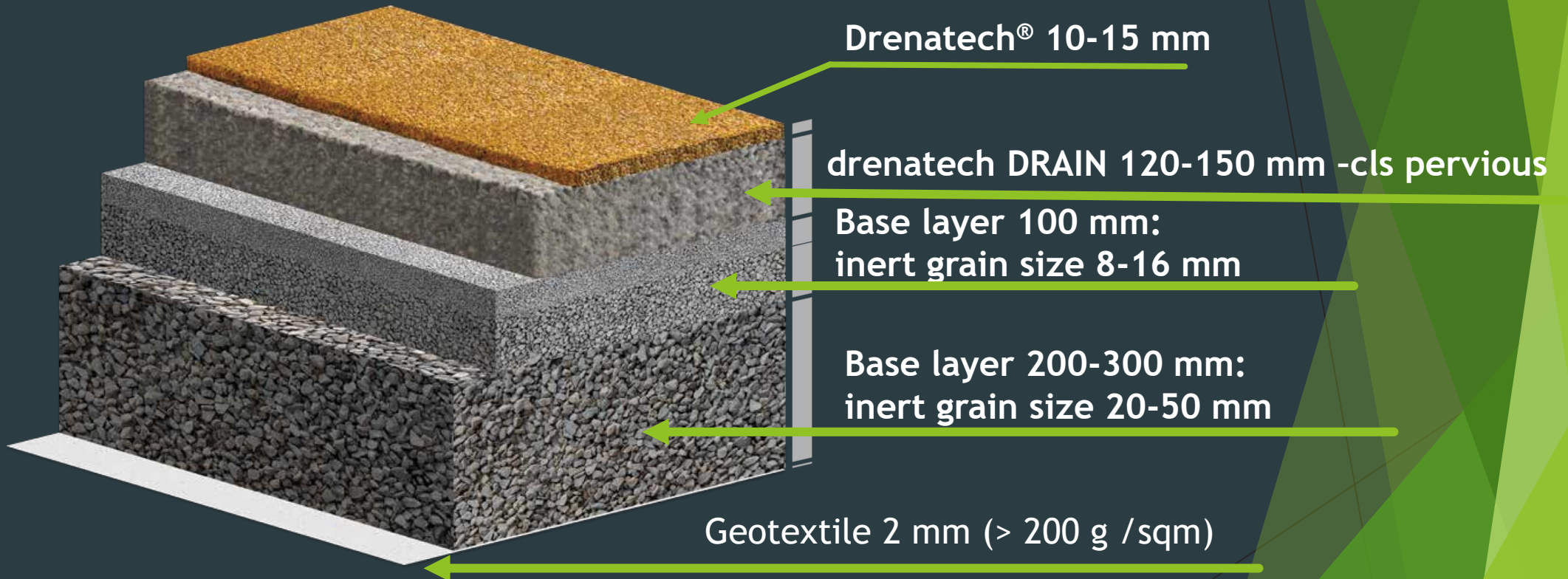
If I don't see I don't believe ...



100% draining solution



AND UNDER ?





Base layer IN GRAVEL



drenatech DRAIN 120-150 mm



Drenatech® flooring 10-15 mm

partially permeable solution



Placed on multiple types of substrate:

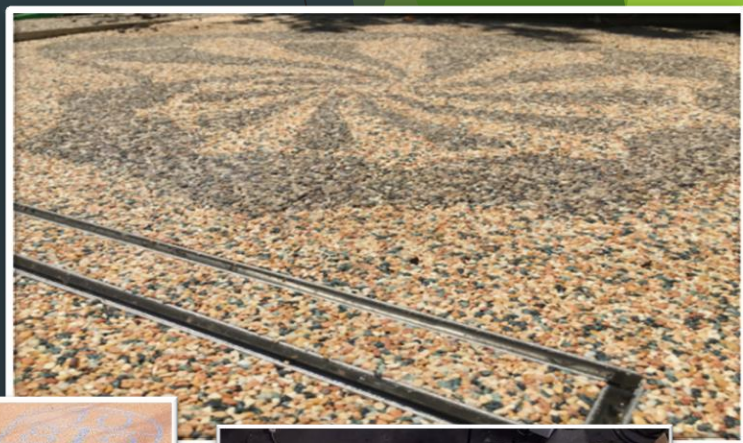




Versatile and customizable

drenatech
INNOVATIVE PAVING SOLUTION

Drenatech® can be made with 18 types of stone different in size, shape (pebble - granulate) and color allowing to give the final work an elegant and refined image. Another feature of absolute relevance is the fact that it is a continuous flooring: this allows it to fit perfectly in open spaces, giving an excellent visual impact, typical of natural stone.





drenatech
INNOVATIVE PAVING SOLUTION

Versatile and customizable

**PHOTOLUMINESCENT
EFFECT**





Resistant and durable

The combination of stone and resin makes Drenatech® a highly resistant flooring, which does not undergo alterations over time.

The tests conducted have shown how Drenatech® has a high chemical-mechanical resistance and can be used both for pedestrian areas (1 cm thick) and for driveways (1.5 cm thick) up to 7.5 t

High resistance in 15 mm thickness

resistant even to the heaviest loads ($\leq 7.5t$) and the action of ice



chemical resistance to acids, bases, hydrocarbons and salts



It is non-slip both for pedestrian use and for vehicle use
DIN51130: R13



Easy to clean with a normal pressure washer

accessible to any vehicle, pram, strollers, skates, bicycles





Suitable for any context

Driveways



Paths of parks and gardens



Terraces



Poolside



Squares and sidewalks



Parking lots





We summarize ...

Features

- Permeable and draining
- Resistant and durable
- Exceptional decorative effect
- Eco-friendly
- Use 100% recycled stones
- Anti-slip
- Driveways
- Weather resistant
- Frost / thaw resistant
- UV resistant
- Easy maintenance

Advantages

- Elegant street furniture
- Versatile and customizable
- Respect the natural cycle of water
- Low accumulation and propagation of heat
- Resistance to extreme environmental conditions
- Reduces cementification
- Suitable for multiple types of substrates
- Easily accessible
- High wear resistance



Photo gallery

drenatech®
INNOVATIVE PAVING SOLUTION

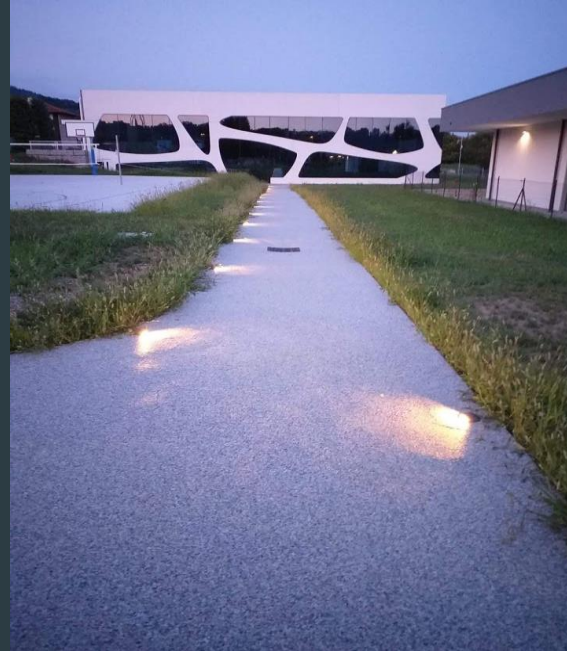
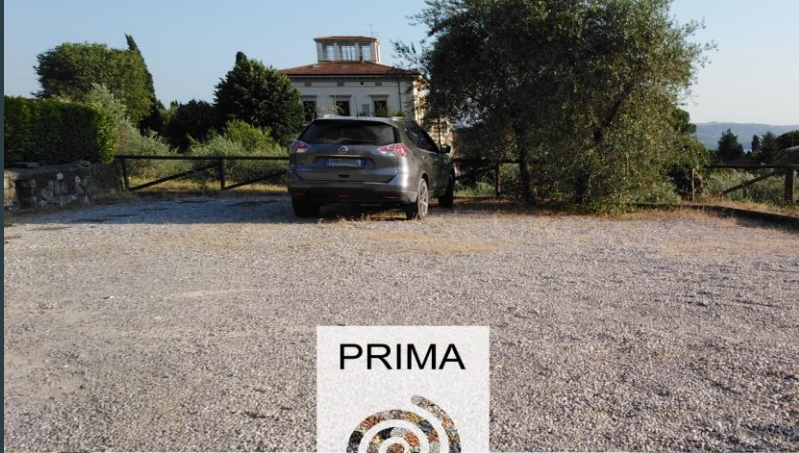




Photo gallery



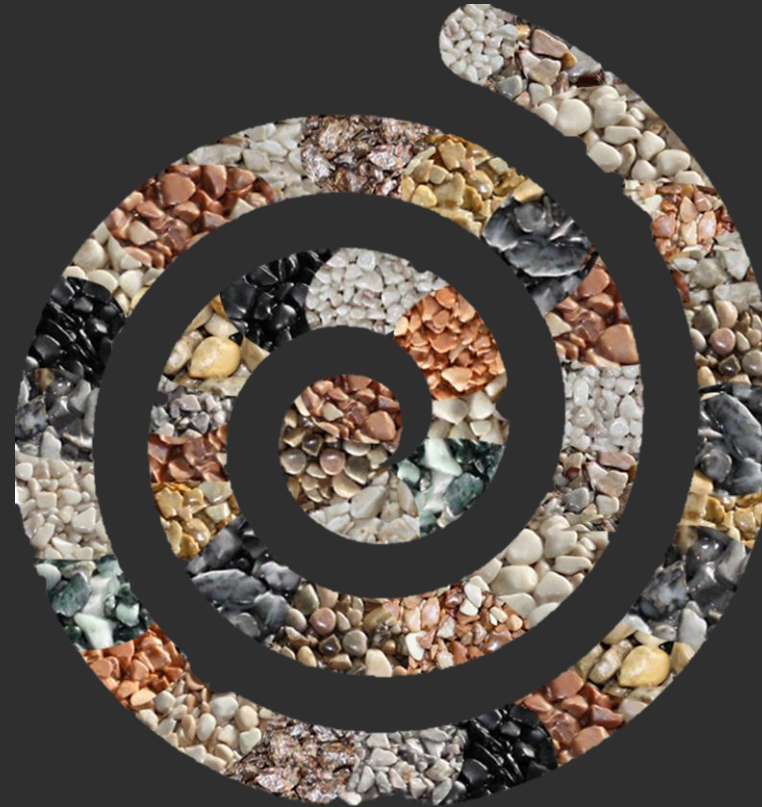
PRIMA



DOPO



Thanks for your attention to Drenatech®



drenatech®

INNOVATIVE.PAVING.SOLUTION